



COMPANY BROCHURE

GIVING DESIRE



INDEX

Contact Info

3

Digital Technology

4

Computer Software & Hardware

9

Security Provision

13



Contact Us!



Address

Great North Road
12869.



Email

info@sunricort.com



Telephone

+260956282792



Website

www.sunricort.com





DIGITAL TECHNOLOGY SERVICES

Digital Employee Task Management Systems



Easier Delegation, Monitoring & Evaluation of Employee Task through adequate digital systems.

Digital Security Systems



Installation of digitalised security systems to enable an automated secure life.

Digital Inventory Management Systems



Effective and suitable management of recording as well as analysis of stock.

Digital Health Management Systems



Adequate provision of standard health care services through excellent digital means.

Digital Farming / Agro Management Systems



Management & Automation implementations For Various Farming / Agro Sectors.

Digital School Management Systems



Digitising School Process and management matters for effectiveness in achieving desirable academic goals.

Digital General Business Management Systems



Digital Management Systems for various businesses e.g. Law Firms, Real Estate, Restaurants, Gyms, etc.

Digital / Biometric Attendance Systems



Obtaining time in and out records for employees thus having adequate knowledge on the presence and absence of employees belonging to a certain entity.

Digital Payroll Systems



Suitable technological ways of handling payroll matters.

Digital Accounting Systems



Proper management of accounting operations through the use of adequate technology.



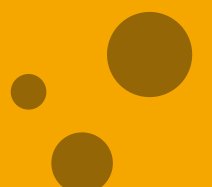
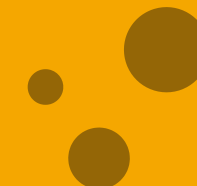
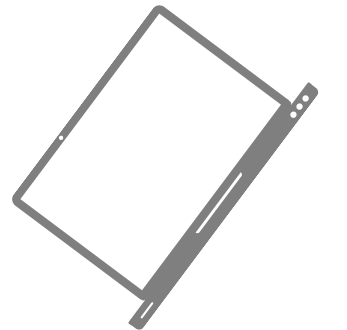
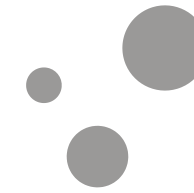
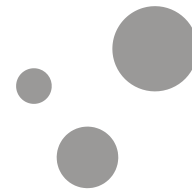
COMPUTER SOFTWARE & HARDWARE

Recovery / Retrieval of Lost Data or Information

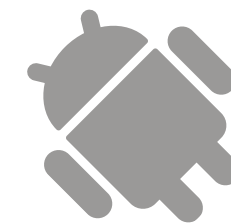
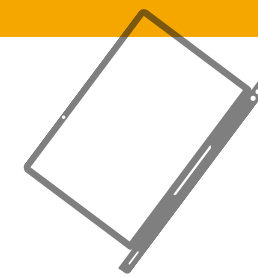
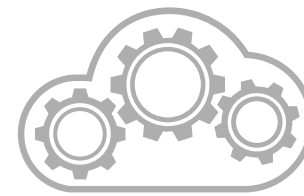
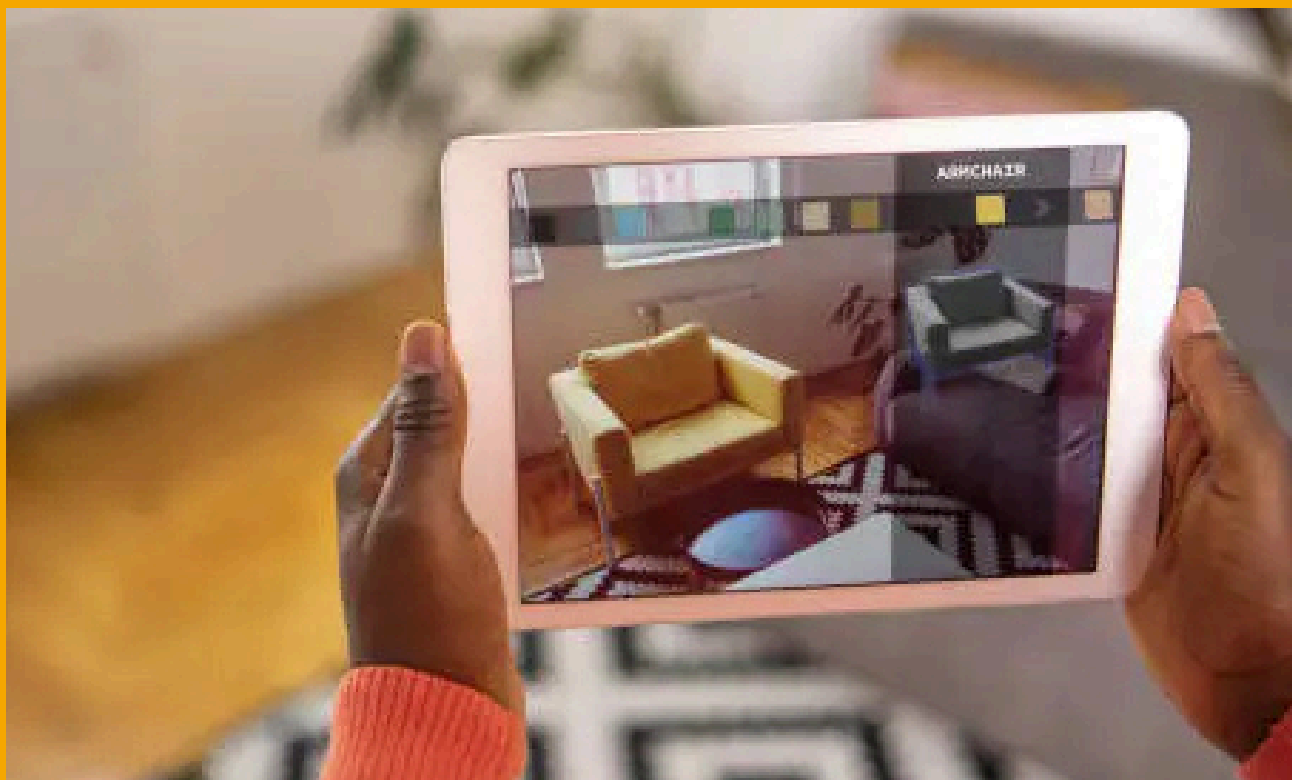


1.

Recovering / Retrieving lost data or information
which could have been deleted or formatted.



Virtual Reality & Augmented Reality Services



Creating a world that feels real but is virtual and adding interactive elements to a real world.

For Instance:

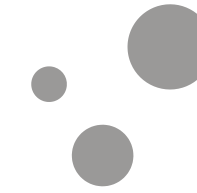
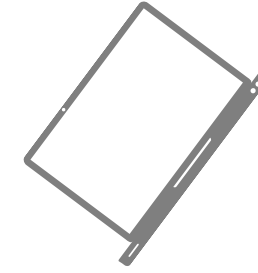
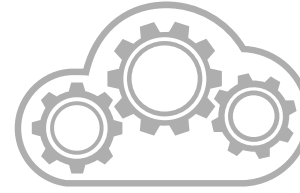
Businesses - Can Train Employees in a Virtual world with real scenarios, reducing cost and risk.

Hospitals - Can use elements added to a real world that help patients needing rehabilitation services.

Schools - Can Create real scenarios for Lawyers, Doctors, Engineers, Economists, Food Specialists, etc to use for where real life scenarios are given for them to learn from and be trained in a virtual world.

Other industries such as Retail, Real Estate, Transport, Banking, etc can also have VR and AR used to benefit and grow them amazingly!!!

CNC Products & Services



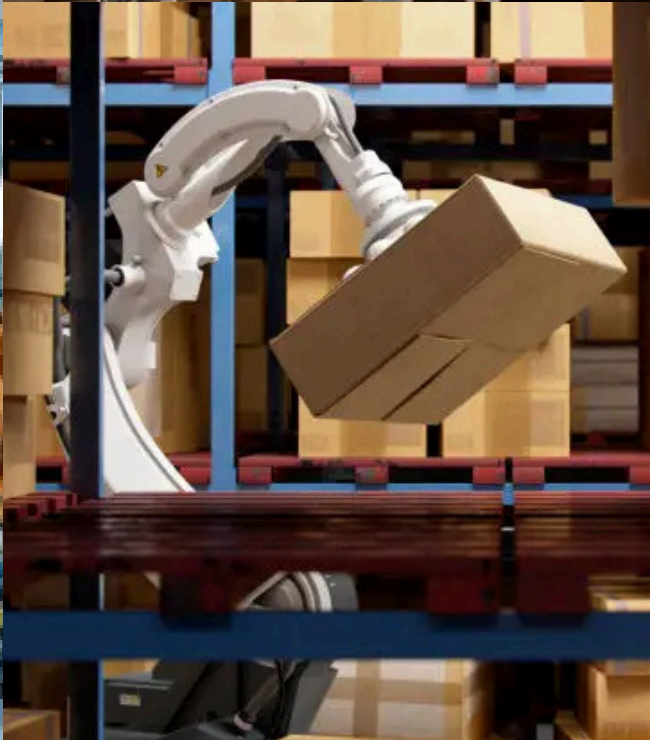
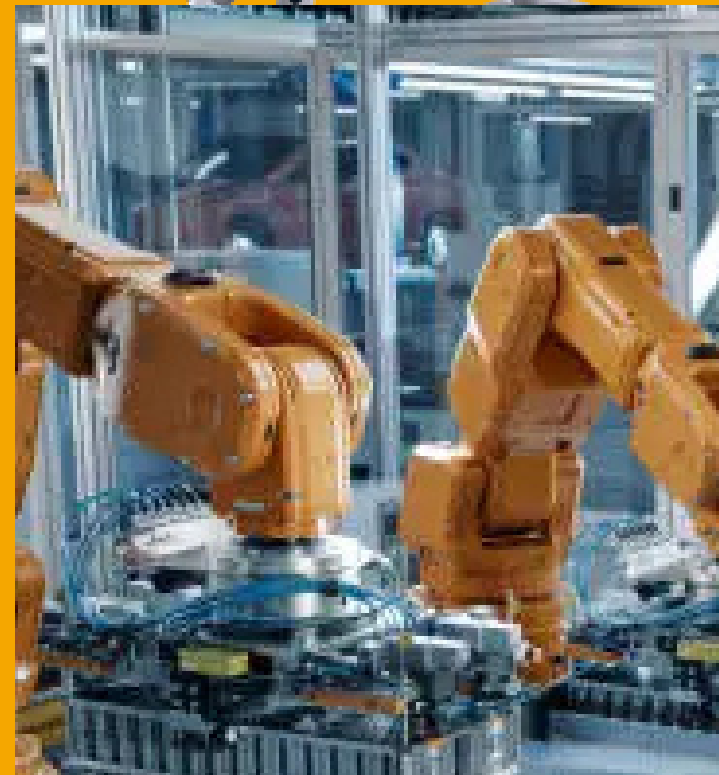
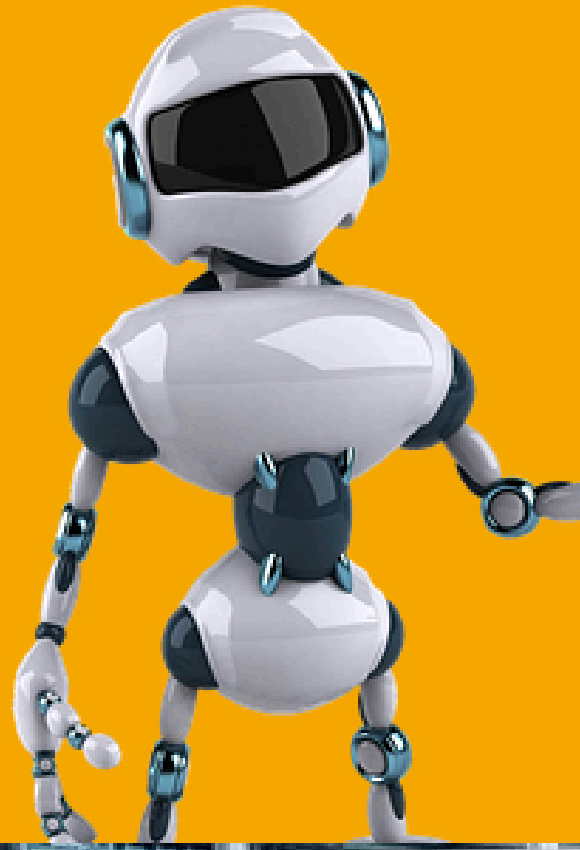
Involves Controlling Machines and Tools through use of a computer in order to follow specific instructions and perform precise tasks automatically.

Here we use Automation to Manufacture and sell products and services such as:

- 1.Furniture Making
- 2.Cabinet Making
- 3.Engraving Services
- 4.Customer Signage Production
- 5.Packaging Design and Manufacturing
- 6.Customised Home Decor
- 7.Education Tool Production
- 8.Artistic Carvings
- 9.Prototyping Services
- 10.Personalised Gifts



Robotics & Automation Services

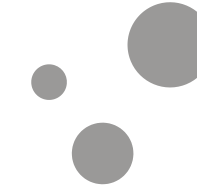
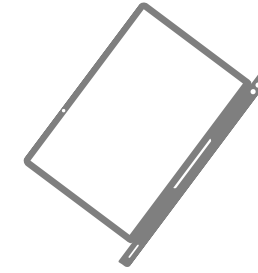
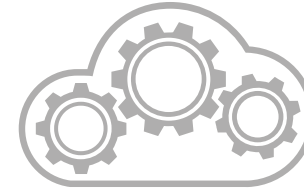
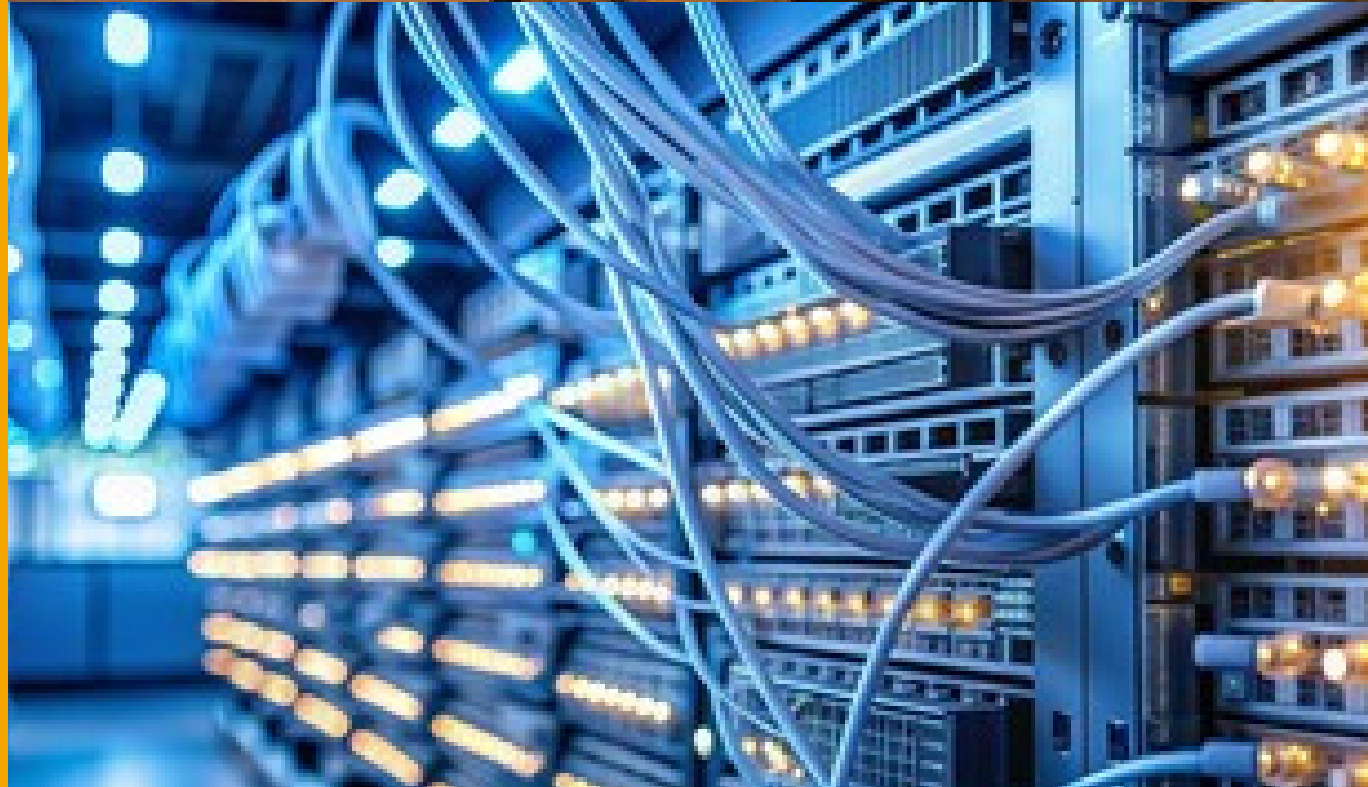


Involves the designing of robots to perform specific tasks as well as the designing of processes and systems that are function automatically so as to perform specific tasks.

Among many services some include:

- 1.Homes** - creating a power system that detects when water in the tank is low so as to turn the pump on and automatically detect when the tank is full so as to automatically turn the pump off .
- 2.Agriculture** - Robots are used to help in effectively planting and harvesting and also for example in poultry raring technolgy systems can sense when water for the animals finishes and thus automatically refill once the water finishes and thus maintaining consistency of water availability.
- 3.Manufacturing** - Robots help in cutting, sorting and assembling components
- 4.Cleaning** - Using Robots to effectively pick liter in communities and generally clean facilities adequately.

Networking Management, Monitoring & Security



Designing, implementing and managing network infrastructure.

Continuously Monitoring Network, Traffic and Performance.

Detecting Anomalies in real time.

Providing firewall management, intrusion detection/prevention systems and VPN'S.

Monitoring and mitigating potential threats.

Software Configuration, Maintenance & Repair



2

Proper Set up, fault clearance and regular keep up for good conditioning of software operations.

Software Installation & Upgrade



3

Placement of necessary and suitable software as well as performance of standard software upgrades.

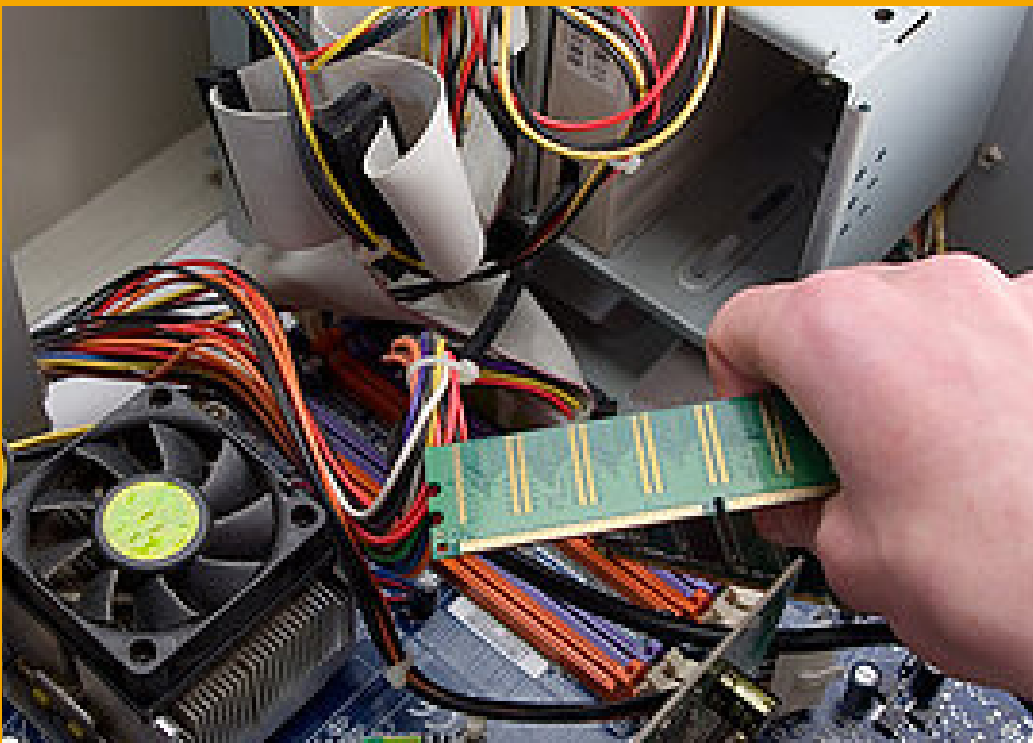
Hardware Configuration, Maintenance & Repair



4

Proper Set Up, fault clearance and regular keep up for good conditioning of hardware operations.

Hardware Installation & Upgrade



5

Placement of necessary and suitable hardware as well as performance of standard hardware upgrades.

A dark, high-contrast photograph of two elephants' heads, facing each other. The image is mostly black and grey, with the texture of the elephants' skin and their tusks visible. Overlaid in the center is the text "SECURITY PROVISION" in a bright yellow, bold, sans-serif font.

SECURITY PROVISION

Temper Evident Security Products



Tamper evident security seals

- The STS035 Strap Seal features a spring steel insert for a strong and positive locking action.



Tamper evident security bags

Secure keys, cash, documents, till trays & valuables. Re-usable durable PVC. Sealed with sequentially numbered barcoded seal.



Tamper evident security CIT bags

- Bags used for storage & transportation of large volumes of notes and coins. Made from heavy-duty PVC nylon. Sealed with steel pin & washer.



GSM traceability padlocks

- GSM TRACEABILITY PADLOCKS is an electronic padlock security system that allows you to have a real time monitoring and instant text notification of entry. It has a satellite based burglar alarm module with rechargeable batteries for traceability all day long.



Lockout padlocks (hasps)

- One to 6 safety padlocks can be locked to safety hasp, allowing secure group lockout device and its light weight for optimized handling and storage. Usually found in mines, production companies, airlines and mines.

Filing And Storage Systems



Mobile cabinets

- High density filing is mobilizing filing cabinets on floor rails. The required space is reduced by up to 80% without loss in flexibility. Traditional floor bound steel cabinets are deceptively space hungry, requiring 3 times their floor space to access drawers, cradles and open doors our mobile cabinets utilize space effectively by sliding units along rails, and having a single access shared by all units.



Chemical storage cabinets

Chemical storage cabinets are store flammable liquids, corrosives, pesticide and other hazardous materials. Safety store flammable liquids in fire resistant safety cabinets to reduce the risk of damaging fire in a work place.



Fire resistant filing cabinets

- When it comes to magnetic media such as diskettes, CD's, DLT Tapes and even rare collector item such as stamps and collectors cards, it is important not to underestimat - ed two key factors. Firstly, such items are extremely sensitive, and secondly, they are usually irreplaceable. The Mutual Data safe ensures that and valuables will be protected.



Deposit Lockers

- Wide availability of lockers in various sizes and at various locations. Option to avail lockers at the branch of your choice. Nomination facility available. Usually found in banks.



Cellphone Cabinets

Cell phone cabinets is constructed entirely of steel. It accommodates cell phones, Ipad, wallets, keys, cameras, tablets pcs and other small things. They are found in retails stores, diamond polishing companies and banks.

PHYSICAL ACCESS CONTROL PRODUCTS



Full height

- Biggest selling turnstile in Africa.
- Suited for applications requiring high volume access and high levels of security.
- Available in single and double.
- 3 arm (120°), 4 arm (90°) and 5 arm (72°).
- Interior and exterior installations.



Waist Height

- Designed for high speed ultra-quiet operation.
- Suited for applications requiring high volume access and medium levels of security.
- Available single and double.
- Available in powder coated mild steel or brushed stainless steel.
- Granite or stainless steel tops.



Special Needs Gate

- Waist height semi-automatic 180° opening gate
- Suited for applications requiring low volume access and low levels of security
- Provides controlled access and unassisted closing for any need, be it trolley, wheelchair or baby buggy
- Framed and frameless glass options.



Man Trap

- Suited for applications requiring high volume access and high levels of security.
- Three sizes allowing for various levels of security, comfort and access for wheelchairs, trolleys and prams.
- Available sizes 800mm wide, 900mm wide, 1000mm wide.
- Available single and double.
- For heavy duty use.
- Designed for integration with any access control system and various double door configurations.



Anti-Terror

- Automatic rising bollard
- Suited for applications requiring uncompromisingly high levels of security. Used extensively in applications such as embassies, consulates, military installations, airports, railway stations, bus stations, ports, oil & gas refineries and mines.



Talon Spikes

- High security road spike barrier.
- Double side spikes offer protection for traffic in any direction.
- Available from 2.5m to 6m.

SAFES (SABS Category)



Drop Safe

- Biggest selling turnstile in Africa.
- Suited for applications requiring high volume access and high levels of security.
- Available in single and double.
- 3 arm (120°), 4 arm (90°) and 5 arm (72°).
- Interior and exterior installations.



Wall Safes

- This range of safes is a cost effective way of storing documents and valuables at home. It is supplied with an easy to operate digital lock (key lock is also available). These safes are also fire resistant and will provide protection and peace of mind you require.



Hotel Safes

- The electronic hotel safe is Safe locks purpose designed for hotel & hospitality industry use. Our safes protect items of value from damage or theft, including money, jewellery, documents and laptops. It allows easy & user friendly operation for both the guest & hotel administration.



Standard office

Fire and burglary protection with enormously increase storage capacity. The Rhino fire, Burglary and standard safe offers fire and burglary protection with enormously increase storage capacity. The safe provides an affordable way to store important documents and other valuables without compromising their security.



Vault Safe

- A vault safe is a secure space where money, valuables, records and documents are stored. Usually in banks.



Bulk cash transfer Units

- Bulk transfer unit is designed to ensure the safe transfer of bulk cash from public to enclosures. They are used to transfer cash from CIT. Usually in banks, filling station etc



Key cabinets

Key cabinets are the latest electronic hardware for managing max keys. It has a frame that defines an interior chamber with at least one panel attached within the interior chamber as well a door.



Petty cash

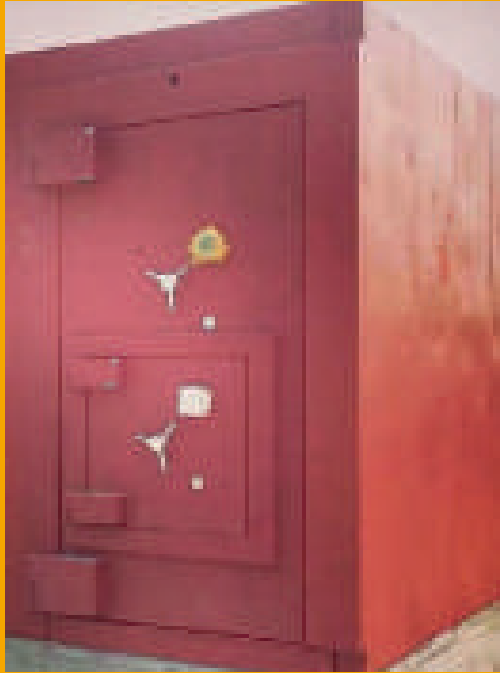
Petty cash box is ideal for storing money, car licences, car keys and other important documents.



Gun safes

Gun safes protect your firearms from theft from falling into the wrong hands. Gun safes are supplied as standard with keys locks but digital electronic locks are available on request.

VAULT PANEL AND STRONG ROOMS



Fixed Vaults

- Our vaults/ strongrooms are fully SABS tested & approved for SABS Cat 2ADM, Cat 3, Cat 4 & the highest level of Cat 5.
- These come as either Reinforced Steel Brickwork walls or basic concreted Brickwork walls. With a minimum wall thickness of 350mm and maximum 600mm you can rest assured that your assets will be safe from burglary. Fixed Vaults/Strongrooms are constructed on site.



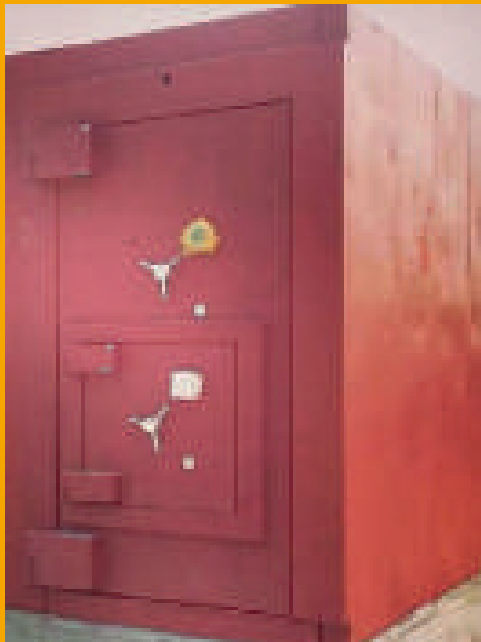
Strong room doors

- All doors offer excellent protection against fire and skilled methods of attack. The sturdy contraction and mechanism make these doors ideal for application as diverse as schools, businesses, post offices and industrial buildings. The higher security level strongroom & vault doors consisting of CAT 2, 2 ADM, 3, 4, 5 are designed with the highest security requirement in mind. These doors are used by banks, CAT companies, mining houses, diamonds & jewelry business as well as chain stores & any concern where high levels of cash & valuables need protection.



Standard office

- All doors offer excellent protection against fire and skilled methods of attack. It is usually found in schools, businesses, Post offices and Industrial buildings. It securely has space welded from the inside & further secured by the steel stopping the full height of each panel. This applies to the walls, floor and ceiling.



Demountable

- MUTUAL's demountable vaults are fully SABS tested & approved for SABS Cat 2ADM, Cat 3, Cat 4 & the highest level of Cat 5.
- The overall height of the vault is 2.4 meters. The length and width dependent on the customers requirements. The vault dimensions are not restricted to any standard sizes. All units are completely pre-assembled in our factory, prior to installation, to ensure a proper fit.concern where high levels of cash & valuables need protection.



Strong room shelving Solutions

- This is shelving designed to hold files or documents in a secure room like a vault or a strong room. This type of shelving is open plan and non-secure hence the need to install it inside a vault or strong room.



Selector Doors

- Secure Single Person Entry
- Controlled Free Passage Mode
- Retrofitable
- This 90° opening mode allows free passage for wheelchairs, bulk goods & also serves as an emergency escape.
- Bullet-resistant viewing window option.
- Triple locking & keypad entry as standard, with optional biometric access..

Access Control Doors/Windows

Anti-bandit doors



- Anti-bandit door is supplied with a steel frame. Standard locking is a cylinder mortise dead with a 5 pin tumbler key system. High security cylinders such as the CISA SP are available as optional extras. Electronic locking can be provided by making use of the CISA strike lock or magnetic locks with battery backup.



Man-trap Cubicle

- Anti-bandit door is supplied with a steel frame. Standard locking is a cylinder mortise dead with a 5 pin tumbler key system. High security cylinders such as the CISA SP are available as optional extras. Electronic locking can be provided by making use of the CISA strike lock or magnetic locks with battery backup.

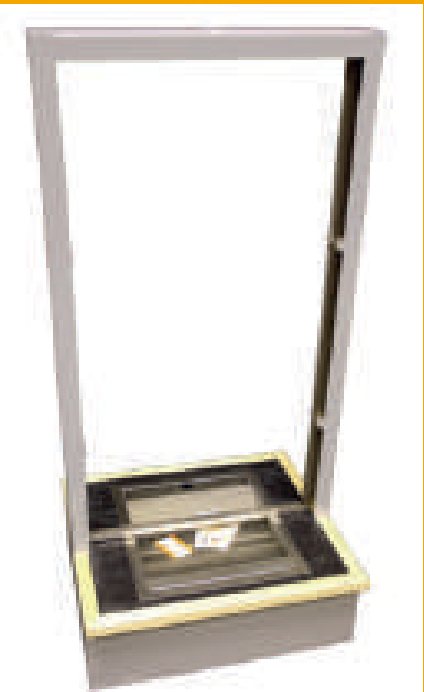


Revolving doors

- Heavy duty Servo motor
- Optical safety edges
- Suited for applications requiring high volume access.
- Creates a draft block between internal and external environments
- 3 wing (120°) and 4wing (90°).
- 1.6m diameter up to 3m diameter
- Available in power coated mild steel or brushed stainless steel.

Bullet resistant pay windows

- Choice of locking and entry systems
- Ballistic protection
- Easy installation
- Provides extra protection against physical attack
- Designed for location at staff entrances
- Constructed to ward off determined raiders.



Fire Exit Emergency Doors

- Fire exit emergency directs people to the proper exit in a fire. They are designed to identify means of escape and should be fitted anywhere that will help people evaluate quickly.



Bullet Resistant Glazing

- Bullet resistant glazing provides protection against a wide range of ballistic threat levels.



Electronic Security Products



Time delay locks

- 255 Users with pin, dallas and Biometric profiles. Users split into 220 users, 20 supervisors, 10 managers, 2 special functions codes and 3 services codes.
- Single dual and multiple users
- CIT Service function
- Time delay setting from 0-255mins
- USB upload of audit report
- CIT CPC Interface.



Safe defenders

- Protects against the following methods of attack before they can happen:
 - cutting
 - grinding
 - bombing/ Explosives.



Cross pavement carries

- Cross pavement carriers are used to securely transport money between the customer and vehicle. The cross pavement carrier is fitted with ink and dye. Usually in banks and security companies



ATM INK Dye protections

- They protect cash both while its being transported to ATMS and inside. If security is breached, the dye is propelled into the cassettes by carbon dioxide.



Access Control Systems

KAccess Control is a system of controlled entry & exit through one or more entry and exit booths. Access Control Cubicle can detect and isolate any individual harboring a concealed fire arm or weapon and allow you to deal to deal with the situation, innocent or otherwise, form a position of safety. Access Control Cubicles control, at your option and sole discretion, the number of people allowed into your place of business at any time in also delays or prohibits exits. The entire system can be totally locked at will..

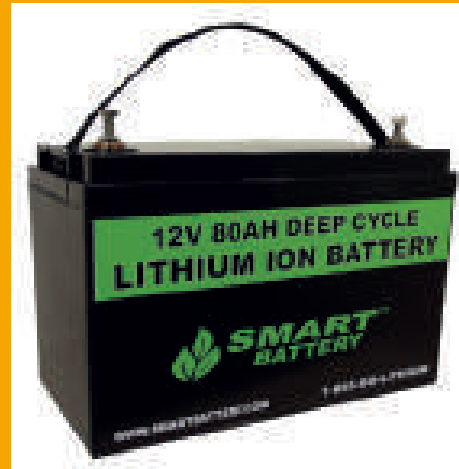


Key cabinets

Product Features

- very high output of dense white fog for maximum protection
- fluid refill system
- air flush system
- improved cosmetic design
- USB interface for upload/download of information and log-file
- built-in battery back-up.

Physical Security Accessories



Lithium standby batteries

- Lithium standby batteries are rechargeable batteries in which lithium ions moves between the anode and the cathode using an intercalated lithium compound as the electrode material instead of the metallic lithium.



Access cards

- Access card is a plastic card with a chip or magnetic strip containing encoded data that is read by passing the card through or over an electronic device, used to provide access to restricted or secure areas or systems.



Mag Locks

- It is a locking device that consists of an electromagnet and armature plate. Ideal for access controlled environments.



Door closers

- A door closer is a mechanical device that closes a door, in general after someone opens it, or after it was automatically opened. Ideal for access controlled environments.



Safe handles

- It provides a passive, non-invasive replaceable and affordable germ protective device.



Safe locks

- It offers the larger selection of mechanical and electronic locks for safes, vaults and safe deposit boxes.



Blank Keys

- It is a key that has not been cut to a specific biting. The blank has a specific cross – sectional profile to match the keyway.



Time delay servo motor

- Single, dual and multiple users
- CIT service function
- Time Delay setting from 0 to 255 minutes individually set per lock on the system.
- Holiday lock global or individually set per lock on the system
- Door open alarm for 0 to 255 minutes global or individually set per lock on the system



Dial combination locks

- Dial combination locks is a lock opened by rotating one or more specially marked dials a given number of times through a particular set of positions in a prescribed order and direction.



Electronic keypads

- It provides a straight forward, reliable and effective to security in offices and commercial premises.



Fluid FL600

- SmokeCloak® FL600 is an exclusive mixture of demineralised water and food grade glycols. The formula that has been developed through many years of experience and R&D gives a unique combination of density and hang time. The SmokeCloak® FL600 fluid is very economical in use and requires just 0,45ccm. to produce a cubic metre of SmokeCloak® vapour.



Voice module CS120D

- The SmokeCloak® CS120D voice module is a 12volt digital voice system, containing an embedded chip with a pre-recorded message. It is designed to be remotely positioned near to the normal access to the building and, if required, the protected area.